

2nd

by Fuwong License Plate

02

License Plate Maker 101:
02 License
Plate Types

FUWONG

What other plate makers are
reading as well!



HOW TO

DISTINGUISH LICENSE PLATE TYPES

2-Layer License Plate

1. Structure:
Reflective film +
Inking layer +
aluminum +
aluminum foil

2. Processing:
Emboss blank 2-layer
plate, rip off 1st layer
film

3. Advantage:
Higher cost for 2-
layer blanks, but no
need paint.

1-Layer License Plate

1. Structure:
Reflective film +
aluminum

2. Processing:
Emboss blank 1-layer
plate, paint embossed
fonts

3. Advantage:
Commonly used for
most countries, can
stamp hot stamping
foils on fonts.

Do you know different
license plate borders?

[Learn Now!](#)



1-Layer Plates



Feature:

1. Structure:

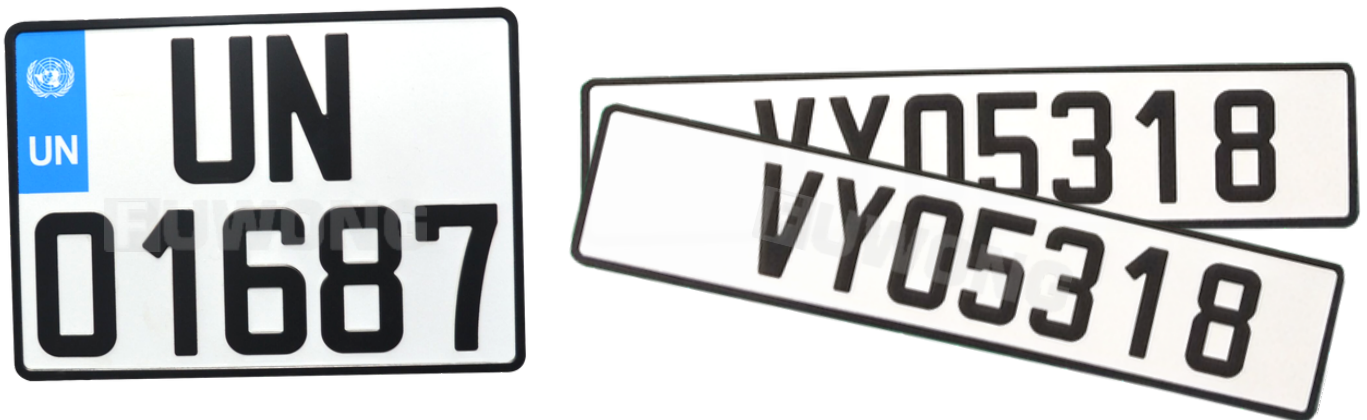
Reflective film + aluminum

The structure features Germany plate format, which is commonly used in EU members, Africa, Middle East, American Countries.

2. Processing:

Emboss blank 1-layer plate, paint embossed fonts

2-Layer Plates



Feature:

1. Structure:

*Reflective film + Inking layer + aluminum + aluminum foil
The format features France registration plate, which is welcome
in some European, African countries.*

2. Processing:

Emboss blank 2-layer plate, rip off 1st layer film

Reference

- Relative machines for finishing blank plates

a. Embossing Machine

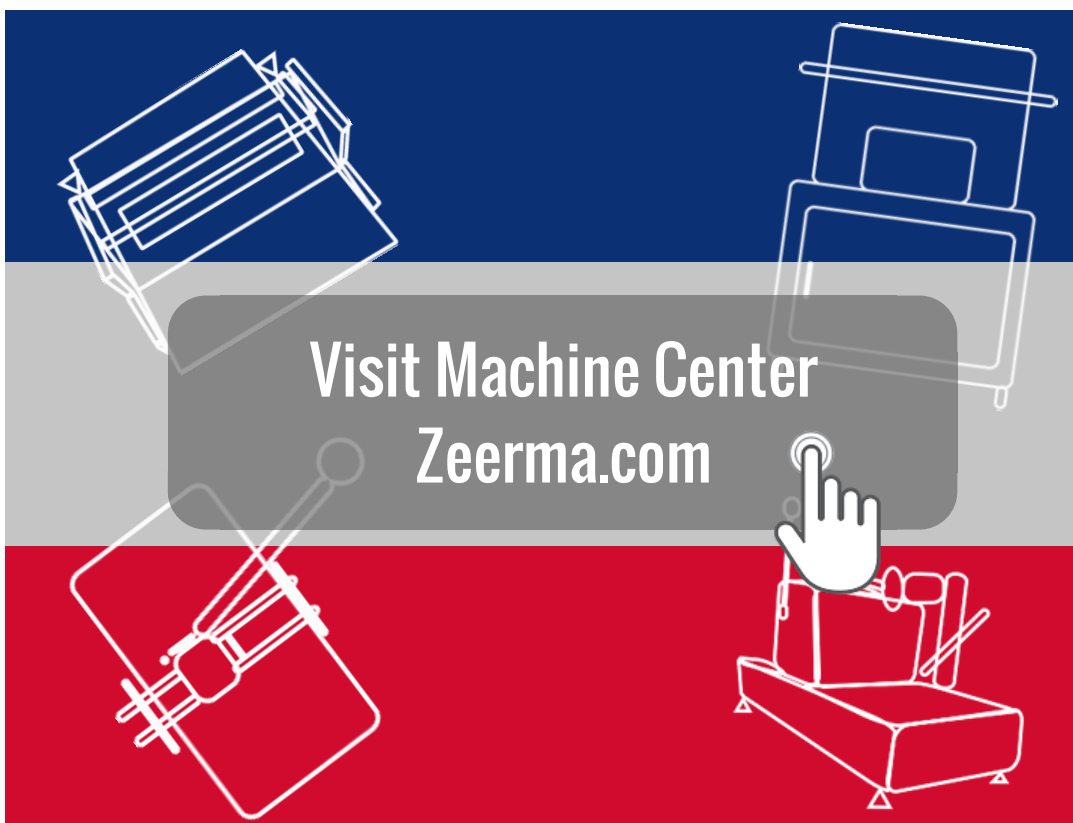
Hydraulic press machine: Electric, semi-automatic embossing press.

Manual press machine: Emboss by hand / with man power.

b. Painting Machine

Hot stamping machine: Electric, painting by hot stamping foil rolls.

Roller coating machine: Electric, painting by ink.



The banner features the title "License Plate Maker 101" in a bold, black, sans-serif font. It is framed by a dark blue graphic consisting of two thick horizontal bars and two thick curved vertical bars that meet at the top and bottom, forming a partial circle. Below the title, there are four icons: a red person silhouette, a yellow document with a red stamp, a grey lightbulb, and a teal line graph with four data points.

License Plate Maker 101

License Plate Maker 101 is built for providing answers and solutions to common questions from our customers, newsletter subscribers and comments on our social media etc based on our experience or research. It is aimed at supporting license plate makers to operate business more confidently and find idea or solution more easily.

Get license plate maker 101:

<http://www.fuwong.com/license-plate-maker-101>

Contact Us



FUWONG
License Plate Maker

No.666, Jingang Avenue,
Jinhua, Zhejiang Province,
China

PO Box: 321037

Email: support@fuwong.com

WhatsApp/Wechat/Mob:

+86 15067832202

www.fuwong.com

  @FUWONGCOM